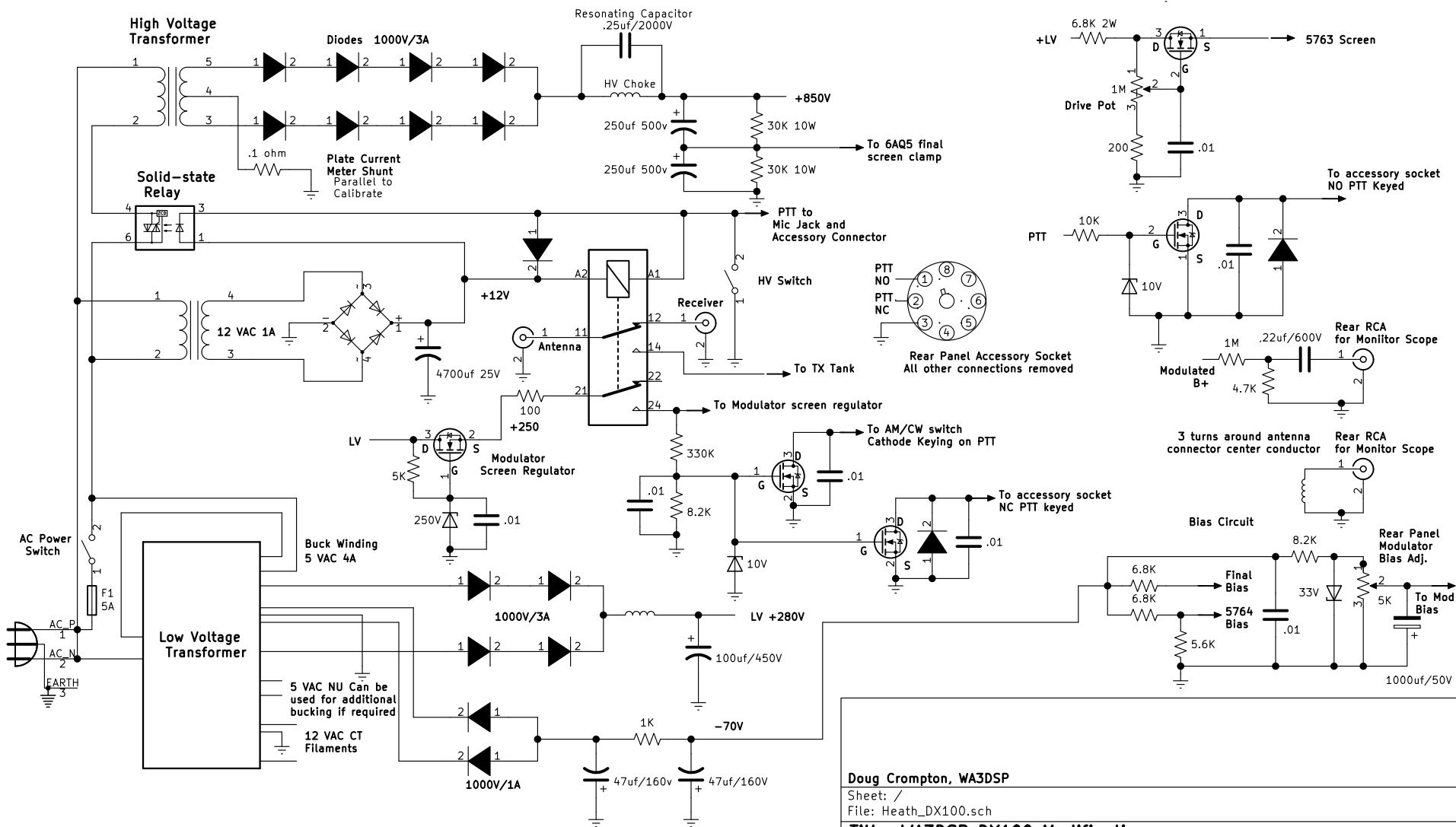


NOTE - Drawings shown here are only parts of the original schematic that changed. Reference the original schematic. If you have any question contact the author, WA3DSP.

Note - add 1K gate series resistors if MOSFET regulators are unstable. Leads should be kept as short as possible. References voltages are made up of series 1W zener diodes.



Doug Crompton, WA3DSP

Sheet: /
File: Heath_DX100.sch

Title: WA3DSP DX100 Modifications

Size: A Date:

KiCad E.D.A. kicad 5.1.5+dfsg1-2build2

Rev: 1

Id: 1/1